



Albany Medical Center Hospital and Columbia Memorial Hospital

**Delivery System Reform
Incentive Payment**

Planning Grant: Webinar 1

August 26, 2014

3:00 - 5:00 pm

Agenda

- Planning Grant Updates
- Membership
- Structure
- Governance
- Sub-committees
- Community Needs Assessment
- Questions and Answers



KNOWN FOR
OUR EXPERTISE.
CHOSEN FOR
OUR CARE.

Planning Grant Updates

- The DSRIP contract with the DOH was executed on August 20th
- First payment to support planning grant activities expected before the end of September



KNOWN FOR
OUR EXPERTISE.
CHOSEN FOR
OUR CARE.

Membership

- All members listed on Columbia-Memorial Hospital's PPS have been invited to join the expanded AMCH PPS
- PPS Continues to grow
- Final list of participants for initial attribution valuation due soon - exact date unknown



KNOWN FOR
OUR EXPERTISE.
CHOSEN FOR
OUR CARE.

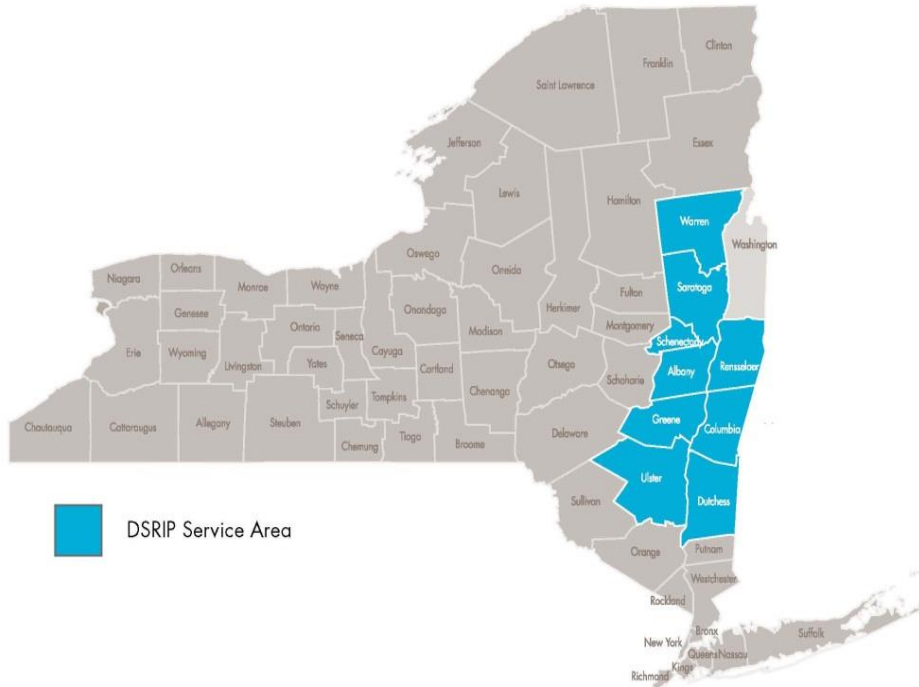
Membership – Cont'd.

- All participating organizations will be members of the Project Advisory Council (PAC).
- Operating principles, guidelines and by-laws are under development
- Will be presented at the first face-to-face meeting of the PAC, date to be announced



KNOWN FOR
OUR EXPERTISE.
CHOSEN FOR
OUR CARE.

DSRIP Regional Service Area



KNOWN FOR
OUR EXPERTISE.
CHOSEN FOR
OUR CARE.

PAC Membership - Types

- Organizational
 - Management
 - Union
 - Worker
- Sub-Committee Chair
- Consumer
- Ex officio – Project Executive Director and Deputy Director

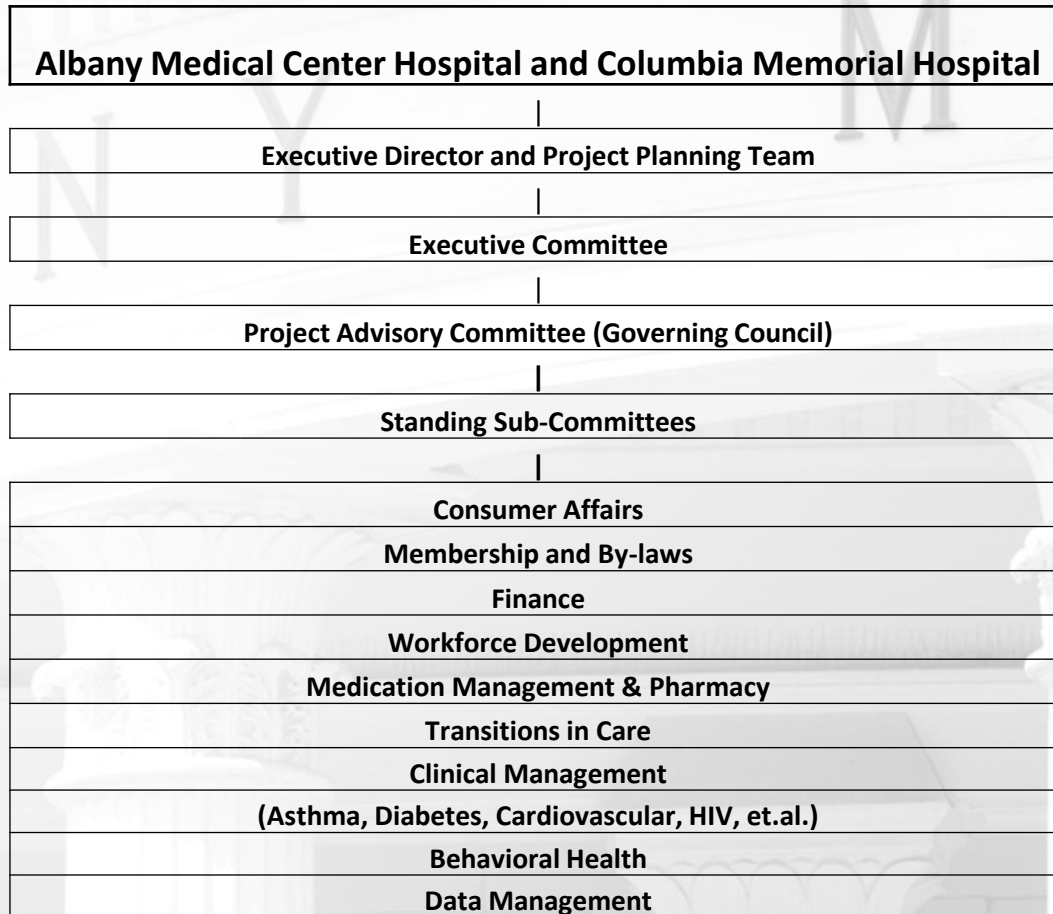


KNOWN FOR
OUR EXPERTISE.
CHOSEN FOR
OUR CARE.

DSRIP Structure – Planning Phase

Proposed DSRIP Structure

Phase I
Project
Planning



KNOWN FOR
OUR EXPERTISE.
CHOSEN FOR
OUR CARE.

Structure and Responsibilities

Project Executive Director and Planning Team

- Overall responsibility for the preparation and submission of the project application
 - Completion of the community needs assessment
 - Management of the necessary structure
 - Selection of projects
 - Identification of resource needs and tasks



KNOWN FOR
OUR EXPERTISE.
CHOSEN FOR
OUR CARE.

Structure and Responsibilities

Executive Committee

- No more than 21 members
- Provide advice and direction to the Planning Team
- Establish policy, review contracts and budgets
- Sub-committee chairs are members
- Others selected based on a rank ordering of Medicaid claims, based on DOH data



KNOWN FOR
OUR EXPERTISE.
CHOSEN FOR
OUR CARE.

Structure and Responsibilities

Provider Advisory Council (PAC)

- **Governing Council**
 - Approve membership for the sub-committees
 - Approve committee reports
 - Actively participate in project activities
 - Approval of the project application to the DOH
 - Consumer and sub-committee chairs will be voting members



KNOWN FOR
OUR EXPERTISE.
CHOSEN FOR
OUR CARE.

Standing Sub-Committees

- Consumer Affairs
- Membership & By-laws
- Finance
- Medication Management and Pharmacy
- Workforce Development
- Data Management
- Management of Asthma
- Management of Diabetes
- HIV/STI Prevention and Treatment
- Transitions of Care / Long Term Care
- Columbia and Green Transformation



KNOWN FOR
OUR EXPERTISE.
CHOSEN FOR
OUR CARE.

Sub-Committee Membership:

- Sub-committees serve at the discretion of the PAC (8-12 members)
- Comprised of subject matter experts from geographic service areas
- Health and social service providers.
- Elect a chair to represent their interests on the PAC
- Membership is voluntary and is non-compensable



KNOWN FOR
OUR EXPERTISE.
CHOSEN FOR
OUR CARE.

Consumer Affairs:

- Represents the interests of Medicaid beneficiaries and the uninsured
- Members provide feedback regarding the unique needs of consumers and how to best meet those needs
- To encourage participation, funds will be provided for stipends and transportation for eligible participants



KNOWN FOR
OUR EXPERTISE.
CHOSEN FOR
OUR CARE.

Membership and By-laws:

- Manages the operating principles, by-laws, structure, and governance of the PAC
- Coordinate with outside legal counsel
- Certify / credential members of the PAC
- Ensure membership is diverse, inclusive and representative of the community
- Securely manage member information and contact lists



KNOWN FOR
OUR EXPERTISE.
CHOSEN FOR
OUR CARE.

Finance:

- Provide oversight of the project budget
- Chaired by lead applicant
- Review attribution methodology
- Quantify savings
- Facilitate distribution of funds among and between eligible member organizations
- Assist with project reporting.



KNOWN FOR
OUR EXPERTISE.
CHOSEN FOR
OUR CARE.

Medication Management and Pharmacy:

- Includes behavioral health experts and licensed pharmacists
- Focus on behavioral health interventions and community-based supportive services
- Provide medication education and support to improve adherence and clinical outcomes for selected chronic illnesses



KNOWN FOR
OUR EXPERTISE.
CHOSEN FOR
OUR CARE.

Workforce Development

- Focuses on workforce issues
- Addresses staff training, development, shortages, staff deployment and workload considerations
- Works on a system level
- Attention paid to re-deployment of staff impacted by shifts in where care is provided over time



KNOWN FOR
OUR EXPERTISE.
CHOSEN FOR
OUR CARE.

Data Management

- Ensures data integrity
- Assists the PAC and the other sub-committees in collecting, storing and analyzing data; data and security access controlled
- Tracks data reporting requirements and ensures compliance



KNOWN FOR
OUR EXPERTISE.
CHOSEN FOR
OUR CARE.

Clinical Management Sub-committees

- Separate sub-committees including clinical experts on asthma, diabetes, cardiovascular disease and HIV/STI; others may be created or these may be changed based on needs assessment
- Focus of sub-committees is on development of realistic, affordable project plans to address DSRIP triple aim goals



KNOWN FOR
OUR EXPERTISE.
CHOSEN FOR
OUR CARE.

Transitions of Care

- Hospital, home health care and long term care coordination and planning to reduce avoidable re-admissions
- Based on needs assessment data, focus on finding solutions to biggest factors



KNOWN FOR
OUR EXPERTISE.
CHOSEN FOR
OUR CARE.

Columbia and Greene

- Geographically based sub-committee focused on unique issues of two county area
- Lead by Columbia-Memorial Hospital but integrated into total project design and implementation



KNOWN FOR
OUR EXPERTISE.
CHOSEN FOR
OUR CARE.

Sub-Committee Membership

- Highest priority is to empanel each committee
- Self-nomination process, as well as finding experts to serve on committees
- Particularly the clinically focused committees
- Send nominations to:
 - George Clifford - cliffog@mail.amc.edu



KNOWN FOR
OUR EXPERTISE.
CHOSEN FOR
OUR CARE.

Community Needs Assessment

- Activities are underway, but much more work needs to be done
- KPMG analyzing data which will be provided in next few weeks
- Vendor selection not yet finalized
- Critical next steps in overall project management



KNOWN FOR
OUR EXPERTISE.
CHOSEN FOR
OUR CARE.