

MEASURE LOGISTICS				07/2015 - MY2 DATA: MONTH 1 OF 12		08/2015 - MY2 DATA: MONTH 2 OF 12		09/2015 - MY2 DATA: MONTH 3 OF 12		10/2015 - MY2 DATA: MONTH 4 OF 12		11/2015 - MY2 DATA: MONTH 5 OF 12		12/2015 - MY2 DATA: MONTH 6 OF 12		01/2016 - MY2 DATA: MONTH 7 OF 12		02/2016 - MY2 DATA: MONTH 8 OF 12		03/2016 - MY2 DATA: MONTH 9 OF 12		04/2016 - MY2 DATA: MONTH 10 OF 12	
Measure Result Name	MY1 Baseline Result [DSRIP Digital Library Extract 20160805]	MY2 Annual Improvement Target	Measure Indicator	JULY MONTHLY MEMBER RESULT	Progress Towards MY2 Annual Target	AUGUST MONTHLY MEMBER RESULT	Progress Towards MY2 Annual Target	SEPTEMBER MONTHLY MEMBER RESULT	Progress Towards MY2 Annual Target	OCTOBER MONTHLY MEMBER RESULT	Progress Towards MY2 Annual Target	NOVEMBER MONTHLY MEMBER RESULT	Progress Towards MY2 Annual Target	DECEMBER MONTHLY MEMBER RESULT	Progress Towards MY2 Annual Target	JANUARY MONTHLY MEMBER RESULT	Progress Towards MY2 Annual Target	FEBRUARY MONTHLY MEMBER RESULT	Progress Towards MY2 Annual Target	MARCH MONTHLY MEMBER RESULT	Progress Towards MY2 Annual Target	APRIL MONTHLY MEMBER RESULT	Progress Towards MY2 Annual Target
	Diabetes Screening for People with Schizophrenia or Bipolar Disease who are Using Antipsychotic Medication	63.63636364		66.17180984	↑	67.37		68.58		71.74		74.66		76.8		77.43		78.22		78.42		81.14	
Engagement of Alcohol and Other Drug Dependence Treatment (Initiation and 2 visits within 44 days)	18.69249395	19.65024455	↑	17.5		17.91		16.88		16.35		16.07		16.34		16.16		16.81		17.24		17.42	
Follow-up after hospitalization for Mental Illness - within 30 days	68.64608076	70.60500209	↑	70.4		70.59		68.65		67.43		66.45		63.2		62.6		64.35		62.99		63.67	
Follow-up after hospitalization for Mental Illness - within 7 days	50.71258907	53.06068501	↑	52.99		52.5		51.03		50.16		49.35		46.13		46.92		48.75		46.79		47.61	
Follow-up care for Children Prescribed ADHD Medications - Initiation Phase	47.61904762	50.08403362	↑	52.23		52.57		52.65		51.29		53.64		54.07		52.73		53		54.27		54.55	

Data Sources:

MY1 Baseline Results and MY2 Annual Improvement Target: DSRIP Digital Library, August 2016 Extract; and MY2 Monthly Member Performance, Monthly Target, and Monthly HP Target Results: SIM, Monthly PPS Tracking Measures Cube

Analyzing the Dashboards:

By Measure Result Name [Re: Progress Towards MY2 Annual Target Columns]:

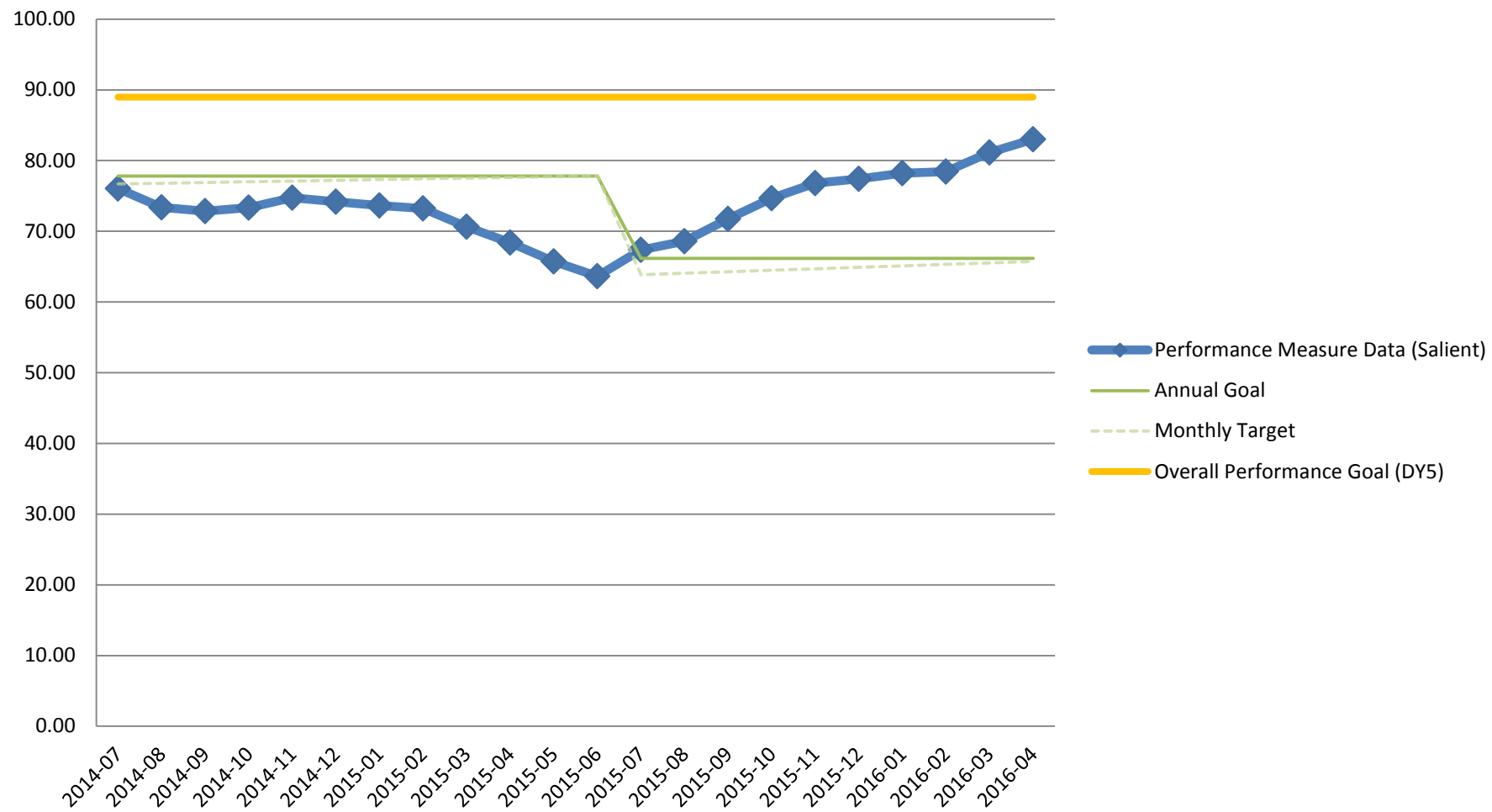
- (1) The percentage found within each circle represents the progress made towards reaching the MY2 Annual Improvement Target within that designated month; and
- (2) The color of each circle represents whether or not the monthly result met or exceeded the monthly target.

red circle = the monthly member result did not meet or exceed the monthly target; and

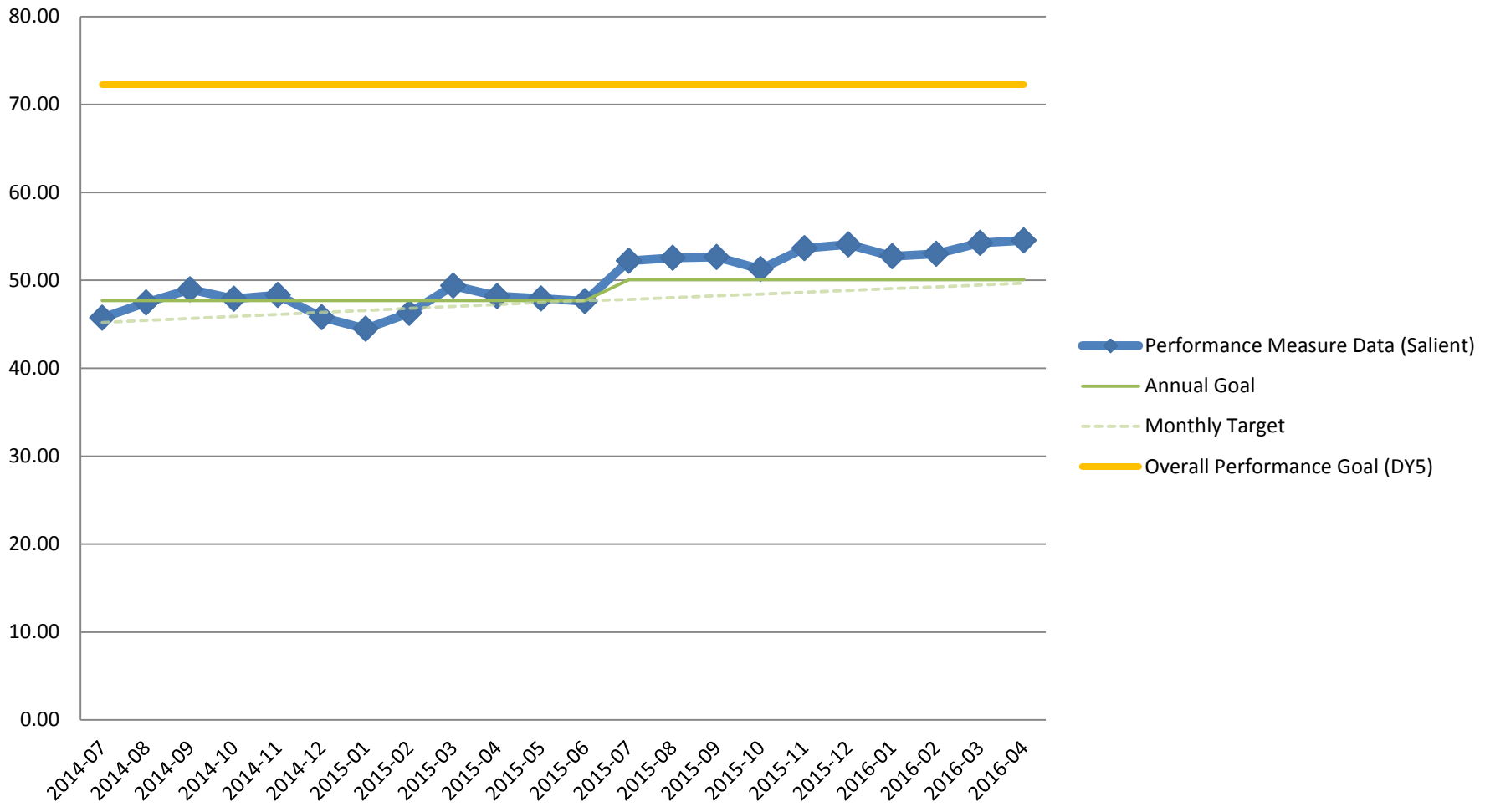
green circle = the monthly member result met or exceeded the monthly target.

Example: For the *Engagement of Alcohol and Other Drug Dependence Treatment (Initiation and 2 visits within 44 days)* Measure; in Month 1 of 12 for MY2 [July 2015]; the monthly member result of 17.5% demonstrates that the result is 89.1% of the way towards reaching the MY2 Annual Improvement Target of 19.7%, but does not meet or exceed July's Monthly Target.

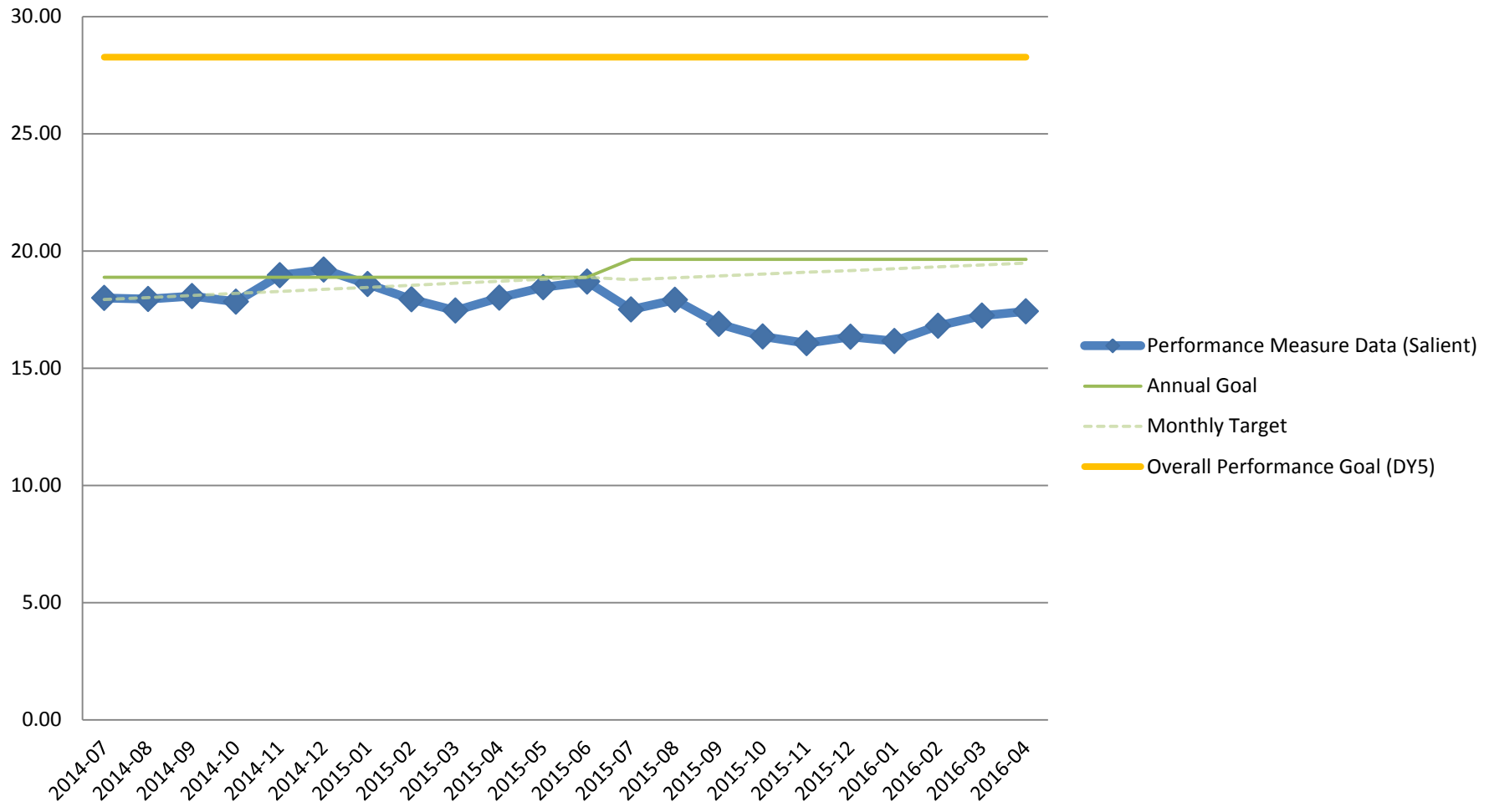
Diabetes Screening (Antipsychotic Medication)



Child ADHD Medication F/U (Initiation)

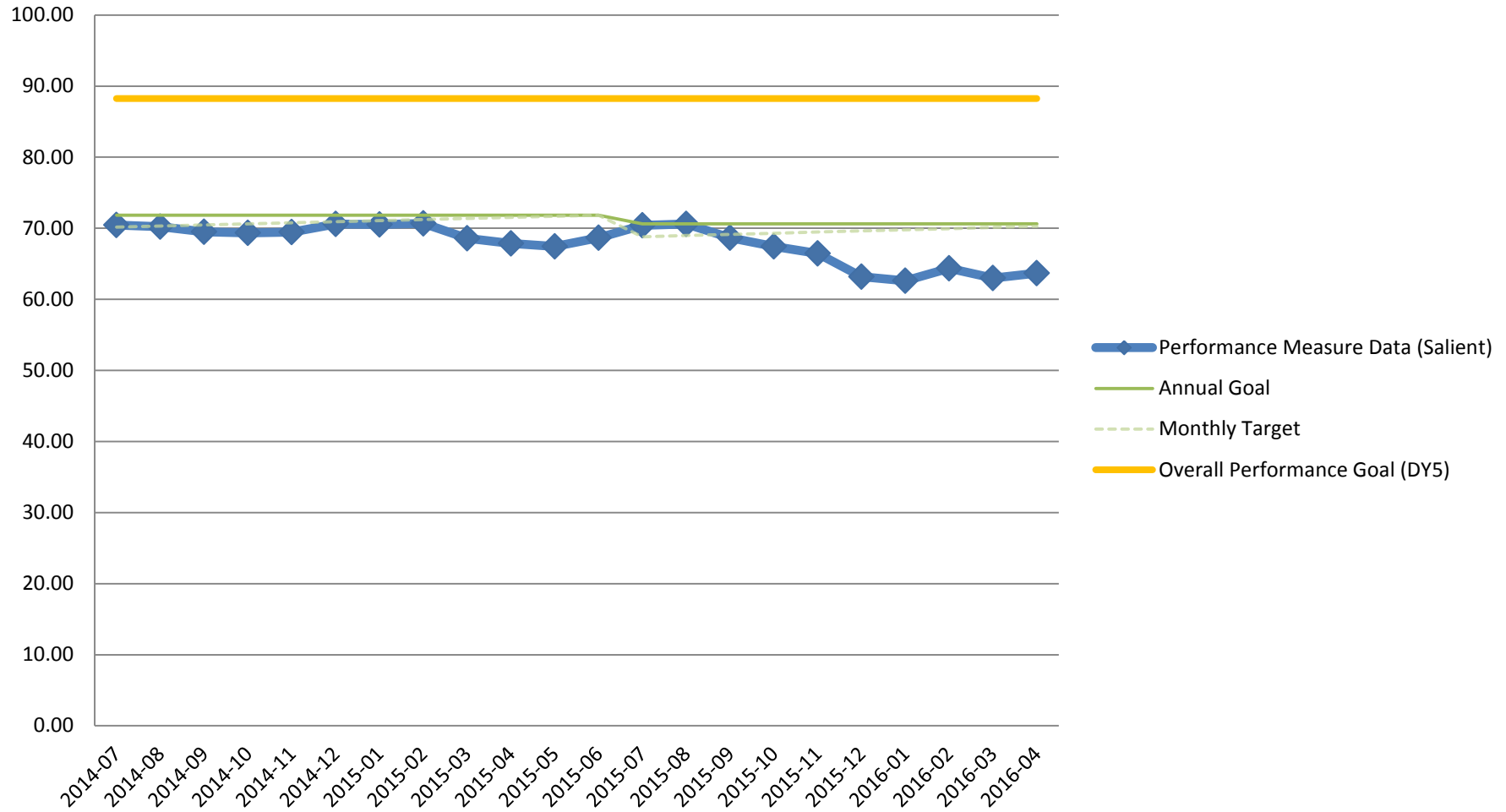


Engagement of Alcohol/Drug Treatment





Follow Up after MH Inpatient (30 Days)



Follow Up after MH Inpatient (7 Days)

